

验证报告

编号: SHAEC24002261702

日期: 2024 年 02 月 20 日

第 1 页, 共 12 页

客户名称: 上海友邦电气(集团)股份有限公司
客户地址: 上海市松江区佘山镇吉业路 528 号

样品名称: 信号隔离器
测试基本型号: UGLB2-C/CV/S
客户参考信息: UGLB2-C/CV/S-1/2, UGLB2-C/CV/S-2/2, UGLH-CD/C, UGLH-CD/C-2/2, UGLH-C/CD, UGLH-C/CD-2/2, UGLH-CB/CD, UGLH-CB/CD-2/2, UGLH-VC/VC/S, UGLH-VC/VC/S-1/2, UGLH-VC/VC/S-2/2, UGLH-VC/VC/S-3/3, UGLH-VC/VC/S-1/3, UGLH-VC/VC/S-1/4, UGLH-PC/CV/S, UGLH-PC/CV/S-1/2, UGLH-PC/CV/S-2/2, UGLH-WSR/S, UGLH-WSR/S-1/2, UGLH-WSR/S-2/2, UGLH-RS232/RS232/S, UGLH-RS485/RS485/S, UGLH-QRS485/QRS485/S, UGLH-TR/TR/S, UGLH-TR/TR/S-1/2, UGLH-TL/TL/S

以上样品及信息由客户提供。

SGS 工作编号: SHP24-003261
样品接收时间: 2024 年 01 月 30 日
验证周期: 2024 年 01 月 30 日 ~ 2024 年 02 月 19 日
验证要求: 参考欧盟 RoHS 指令 2011/65/EU 的修正指令(EU) 2015/863。
验证方法: 见后续页。
验证程序和结果: 见后续页。

检测结果总结:

检测项目	结论
欧盟 RoHS 指令 2011/65/EU 附录 II 的修正指令(EU) 2015/863-铅、汞、镉、六价铬、多溴联苯 (PBB)、多溴二苯醚 (PBDE)、邻苯二甲酸二(2-乙基己基)酯 (DEHP)、邻苯二甲酸丁苄酯 (BBP)、邻苯二甲酸二丁酯 (DBP)和邻苯二甲酸二异丁酯 (DIBP)	符合

通标标准技术服务(上海)有限公司
授权签名

陈皆欢

Jessica Chen 陈皆欢
批准签署人

scan to see the report



4C4E60EB



Unless otherwise agreed in writing, this document is issued by the Company subject to its General Conditions of Service printed overleaf, available on request or accessible at <http://www.sgs.com/en/Terms-and-Conditions.aspx> and, for electronic format documents, subject to Terms and Conditions for Electronic Documents at <http://www.sgs.com/en/Terms-and-Conditions/Terms-e-Documents.aspx>. Attention is drawn to the limitation of liability, indemnification and jurisdiction issues defined therein. Any holder of this document is advised that information contained hereon reflects the Company's findings at the time of its intervention only and within the limits of Client's instructions, if any. The Company's sole responsibility is to its Client and this document does not exonerate parties to a transaction from exercising all their rights and obligations under the transaction documents. This document cannot be reproduced except in full, without prior written approval of the Company. Any unauthorized alteration, forgery or falsification of the content or appearance of this document is unlawful and offenders may be prosecuted to the fullest extent of the law. Unless otherwise stated the results shown in this test report refer only to the sample(s) tested.

Attention: To check the authenticity of testing/inspection report & certificate, please contact us at telephone: (86-755) 8307 1443, or email: CN.Doccheck@sgs.com

SGS-CSTC (Shanghai) Technical Services (Shanghai) Co., Ltd.
Testing Center - Chemical Laboratory

3rd Building, No. 889 Yishan Road Xuhui District, Shanghai China 200233 t E&E (86-21) 61402553 f E&E (86-21) 64953679 www.sgsgroup.com.cn
中国·上海·徐汇区宜山路889号3号楼 邮编: 200233 t HL (86-21) 61402594 f HL (86-21) 61156899 e sgs.china@sgs.com

样品照片



验证方法:

1. 参考 IEC 62321-2:2021, 拆分申请者提供的成品。
2. 参考 IEC 62321-1:2013, 仅对本报告照片中标识的样品进行了下列测试分析。
 - (1) 参考 IEC 62321-3-1: 2013, 用能量色散型 X 射线荧光分析仪器进行筛选。
 - (2) 湿法化学检测方法: 参考 IEC 62321-4:2013+A1:2017, IEC 62321-5:2013, IEC 62321-7-1:2015, IEC 62321-7-2:2017, ISO 17075-1:2017, IEC 62321-12:2023, IEC 62321-6:2015 和 IEC 62321-8:2017, 采用 ICP-OES, UV-Vis 和 GC- MS 进行分析。



Unless otherwise agreed in writing, this document is issued by the Company subject to its General Conditions of Service printed overleaf, available on request or accessible at <http://www.sgs.com/en/Terms-and-Conditions.aspx> and, for electronic format documents, subject to Terms and Conditions for Electronic Documents at <http://www.sgs.com/en/Terms-and-Conditions/Terms-e-Documents.aspx>. Attention is drawn to the limitation of liability, indemnification and jurisdiction issues defined therein. Any holder of this document is advised that information contained hereon reflects the Company's findings at the time of its intervention only and within the limits of Client's instructions, if any. The Company's sole responsibility is to its Client and this document does not exonerate parties to a transaction from exercising all their rights and obligations under the transaction documents. This document cannot be reproduced except in full, without prior written approval of the Company. Any unauthorized alteration, forgery or falsification of the content or appearance of this document is unlawful and offenders may be prosecuted to the fullest extent of the law. Unless otherwise stated the results shown in this test report refer only to the sample(s) tested.

Attention: To check the authenticity of testing / inspection report & certificate, please contact us at telephone: (86-755) 8307 1443, or email: CN.Doccheck@sgs.com

验证报告

编号: SHAEC24002261702

日期: 2024 年 02 月 20 日

第 3 页, 共 12 页

验证部件外观描述:

样品序号	样品编号	SGS 样品 ID	样品描述
SN1	A1	SHA24-0022617-0001.C001	标签上绿/黑色粘性塑料
SN2	A2	SHA24-0022617-0001.C002	银色金属弹簧
SN3	A3	SHA24-0022617-0001.C003	银色金属支架
SN4	A4	SHA24-0022617-0001.C004	标签上绿/黑色粘性塑料
SN5	A5	SHA24-0022617-0001.C005	绿色塑料固定块
SN6	A6	SHA24-0022617-0001.C006	绿色塑料外壳
SN7	A7	SHA24-0022617-0001.C007	绿色塑料外壳
SN8	A8	SHA24-0022617-0001.C008	接头上绿色塑料
SN9	A9	SHA24-0022617-0001.C009	接头上银色金属
SN10	A10	SHA24-0022617-0001.C010	接头上银色金属
SN11	A11	SHA24-0022617-0001.C011	接头上银蓝色金属螺丝
SN12	A12	SHA24-0022617-0001.C012	接头上绿色塑料
SN13	A13	SHA24-0022617-0001.C013	接头上灰色塑料
SN14	A14	SHA24-0022617-0001.C014	银色金属插针
SN15	A15	SHA24-0022617-0001.C015	银色金属插针
SN16	A16	SHA24-0022617-0001.C016	绿色 PCB 本体
SN17	A17	SHA24-0022617-0001.C017	PCB 上黑色铁氧体
SN18	A18	SHA24-0022617-0001.C018	黑色 PCB 本体
SN19	A19	SHA24-0022617-0001.C019	PCB 上黑色铁氧体
SN20	A20	SHA24-0022617-0001.C020	PCB 电感上铜色金属
SN21	A21	SHA24-0022617-0001.C021	PCB 电感上黑色铁氧体
SN22	A22	SHA24-0022617-0001.C022	PCB 上黑色二极管本体
SN23	A23	SHA24-0022617-0001.C023	PCB 上黑色 IC 本体
SN24	A24	SHA24-0022617-0001.C024	PCB 上黑色 IC 本体
SN25	A25	SHA24-0022617-0001.C025	PCB 上黑色电容本体



Unless otherwise agreed in writing, this document is issued by the Company subject to its General Conditions of Service printed overleaf, available on request or accessible at <http://www.sgs.com/en/Terms-and-Conditions.aspx> and, for electronic format documents, subject to Terms and Conditions for Electronic Documents at <http://www.sgs.com/en/Terms-and-Conditions/Terms-e-Documents.aspx>. Attention is drawn to the limitation of liability, indemnification and jurisdiction issues defined therein. Any holder of this document is advised that information contained hereon reflects the Company's findings at the time of its intervention only and within the limits of Client's instructions, if any. The Company's sole responsibility is to its Client and this document does not exonerate parties to a transaction from exercising all their rights and obligations under the transaction documents. This document cannot be reproduced except in full, without prior written approval of the Company. Any unauthorized alteration, forgery or falsification of the content or appearance of this document is unlawful and offenders may be prosecuted to the fullest extent of the law. Unless otherwise stated the results shown in this test report refer only to the sample(s) tested.

Attention: To check the authenticity of testing / inspection report & certificate, please contact us at telephone: (86-755) 8307 1443, or email: CN.Doccheck@sgs.com

SGS-CSTC (Shanghai) Technical Services (Shanghai) Co., Ltd.
Testing Center-Chemical Laboratory

3rd Building, No. 889 Yishan Road Xuhui District, Shanghai China 200233
中国·上海·徐汇区宜山路889号3号楼 邮编: 200233

t E&E (86-21) 61402553 f E&E (86-21) 64953679 www.sgsgroup.com.cn
t HL (86-21) 61402594 f HL (86-21) 61156899 e sgs.china@sgs.com

验证报告

编号: SHAEC24002261702

日期: 2024 年 02 月 20 日

第 4 页, 共 12 页

样品序号	样品编号	SGS 样品 ID	样品描述
SN26	A26	SHA24-0022617-0001.C026	PCB 上棕色电容本体
SN27	A27	SHA24-0022617-0001.C027	PCB 上黑色三极管本体
SN28	A28	SHA24-0022617-0001.C028	PCB 上黑色 IC 本体
SN29	A29	SHA24-0022617-0001.C029	PCB 开关上黑色塑料
SN30	A30	SHA24-0022617-0001.C030	PCB 开关上棕色塑料
SN31	A31	SHA24-0022617-0001.C031	PCB 开关上白色 PCB 本体
SN32	A32	SHA24-0022617-0001.C032	PCB 开关上银色金属
SN33	A33	SHA24-0022617-0001.C033	PCB 上黑色电容本体
SN34	A34	SHA24-0022617-0001.C034	PCB 上银色金属焊锡
SN35	A35	SHA24-0022617-0001.C035	绿色 PCB 本体



SGS-CSTC Standards Technical Services (Shanghai) Co., Ltd.
Testing Center-Chemical Laboratory

Unless otherwise agreed in writing, this document is issued by the Company subject to its General Conditions of Service printed overleaf, available on request or accessible at <http://www.sgs.com/en/Terms-and-Conditions.aspx> and, for electronic format documents, subject to Terms and Conditions for Electronic Documents at <http://www.sgs.com/en/Terms-and-Conditions/Terms-e-Documents.aspx>. Attention is drawn to the limitation of liability, indemnification and jurisdiction issues defined therein. Any holder of this document is advised that information contained hereon reflects the Company's findings at the time of its intervention only and within the limits of Client's instructions, if any. The Company's sole responsibility is to its Client and this document does not exonerate parties to a transaction from exercising all their rights and obligations under the transaction documents. This document cannot be reproduced except in full, without prior written approval of the Company. Any unauthorized alteration, forgery or falsification of the content or appearance of this document is unlawful and offenders may be prosecuted to the fullest extent of the law. Unless otherwise stated the results shown in this test report refer only to the sample(s) tested.

Attention: To check the authenticity of testing / inspection report & certificate, please contact us at telephone: (86-755) 8307 1443, or email: CN.Doccheck@sgs.com

3rd Building, No. 889 Yishan Road Xuhui District, Shanghai China 200233 t E&E (86-21) 61402553 f E&E (86-21) 64953679 www.sgsgroup.com.cn
中国·上海·徐汇区宜山路889号3号楼 邮编: 200233 t HL (86-21) 61402594 f HL (86-21) 61156899 e sgs.china@sgs.com

验证报告

编号: SHAEC24002261702

日期: 2024年02月20日

第5页, 共12页

验证结果:

根据物料风险评估的结果, 验证送测样品中的以下材料。(除特别标注, 单位均为: mg/kg)

检测项目	A1	A2	A3	A4	A5	A6	A7	A8
Cd	BL	BL	BL	BL	BL	BL	BL	BL
Pb	BL	BL	BL	BL	BL	BL	BL	BL
Hg	BL	BL	BL	BL	BL	BL	BL	BL
Cr(VI)▼	BL	ND	BL	BL	BL	BL	BL	BL
PBB	BL	---	---	BL	BL	BL	BL	BL
PBDE	BL	---	---	BL	BL	BL	BL	BL
DBP	BL	---	---	BL	BL	BL	BL	BL
BBP	BL	---	---	BL	BL	BL	BL	BL
DEHP	BL	---	---	BL	BL	BL	BL	BL
DIBP	BL	---	---	BL	BL	BL	BL	BL
结论	符合	符合	符合	符合	符合	符合	符合	符合

检测项目	A9	A10	A11	A12	A13	A14	A15	A16
Cd	BL	BL	BL	BL	BL	BL	BL	BL
Pb	BL	OL▲	BL	BL	BL	BL	BL	BL
Hg	BL	BL	BL	BL	BL	BL	BL	BL
Cr(VI)▼	BL	BL	BL	BL	BL	BL	BL	BL
PBB	---	---	---	BL	ND	---	---	ND
PBDE	---	---	---	BL	ND	---	---	ND
DBP	---	---	---	BL	BL	---	---	BL
BBP	---	---	---	BL	BL	---	---	BL
DEHP	---	---	---	BL	BL	---	---	BL
DIBP	---	---	---	BL	BL	---	---	BL
结论	符合	符合	符合	符合	符合	符合	符合	符合

检测项目	A17	A18	A19	A20	A21	A22	A23	A24
Cd	BL	BL	BL	BL	BL	BL	BL	BL
Pb	BL	BL	BL	BL	ND	BL	BL	BL
Hg	BL	BL	BL	BL	BL	BL	BL	BL
Cr(VI)▼	BL	BL	BL	BL	BL	BL	BL	BL
PBB	BL	ND	BL	---	BL	BL	BL	BL
PBDE	BL	ND	BL	---	BL	BL	BL	BL
DBP	---	BL	---	---	---	BL	BL	BL
BBP	---	BL	---	---	---	BL	BL	BL
DEHP	---	BL	---	---	---	BL	BL	BL
DIBP	---	BL	---	---	---	BL	BL	BL
结论	符合	符合	符合	符合	符合	符合	符合	符合

检测项目	A25	A26	A27	A28	A29	A30	A31	A32
Cd	BL	BL	BL	BL	BL	BL	BL	BL
Pb	ND	BL	BL	BL	BL	BL	BL	BL
Hg	BL	BL	BL	BL	BL	BL	BL	BL



SGS-CSTC Standards Technical Services (Shanghai) Co., Ltd.
Testing Center-Chemical Laboratory

Unless otherwise agreed in writing, this document is issued by the Company subject to its General Conditions of Service printed overleaf, available on request or accessible at <http://www.sgs.com/en/Terms-and-Conditions.aspx>; and, for electronic format documents, subject to Terms and Conditions for Electronic Documents at <http://www.sgs.com/en/Terms-and-Conditions/Terms-e-Documents.aspx>. Attention is drawn to the limitation of liability, indemnification and jurisdiction issues defined therein. Any holder of this document is advised that information contained hereon reflects the Company's findings at the time of its intervention only and within the limits of Client's instructions, if any. The Company's sole responsibility is to its Client and this document does not exonerate parties to a transaction from exercising all their rights and obligations under the transaction documents. This document cannot be reproduced except in full, without prior written approval of the Company. Any unauthorized alteration, forgery or falsification of the content or appearance of this document is unlawful and offenders may be prosecuted to the fullest extent of the law. Unless otherwise stated the results shown in this test report refer only to the sample(s) tested.

Attention: To check the authenticity of testing / inspection report & certificate, please contact us at telephone: (86-755) 8307 1443, or email: CN.Doccheck@sgs.com

3rd Building, No. 889 Yishan Road Xuhui District, Shanghai China 200233 t E&E (86-21) 61402553 f E&E (86-21) 64953679 www.sgsgroup.com.cn
中国·上海·徐汇区宜山路889号3号楼 邮编: 200233 t HL (86-21) 61402594 f HL (86-21) 61156899 e sgs.china@sgs.com

验证报告

编号: SHAEC24002261702

日期: 2024年02月20日

第6页, 共12页

检测项目	A25	A26	A27	A28	A29	A30	A31	A32
Cr(VI)▼	BL	BL	BL	BL	BL	BL	BL	ND
PBB	BL	BL	BL	BL	ND	BL	ND	---
PBDE	BL	BL	BL	BL	ND	BL	ND	---
DBP	BL	BL	BL	BL	BL	BL	BL	---
BBP	BL	BL	BL	BL	BL	BL	BL	---
DEHP	BL	BL	BL	BL	BL	BL	BL	---
DIBP	BL	BL	BL	BL	BL	BL	BL	---
结论	符合	符合	符合	符合	符合	符合	符合	符合

检测项目	A33	A34	A35
Cd	BL	BL	BL
Pb	ND	BL	BL
Hg	BL	BL	BL
Cr(VI)▼	BL	BL	BL
PBB	BL	---	ND
PBDE	BL	---	ND
DBP	BL	---	BL
BBP	BL	---	BL
DEHP	BL	---	BL
DIBP	BL	---	BL
结论	符合	符合	符合



SGS-CSTC (Shanghai) Co., Ltd.
Testing Center-Chemical Laboratory

Unless otherwise agreed in writing, this document is issued by the Company subject to its General Conditions of Service printed overleaf, available on request or accessible at <http://www.sgs.com/en/Terms-and-Conditions.aspx> and, for electronic format documents, subject to Terms and Conditions for Electronic Documents at <http://www.sgs.com/en/Terms-and-Conditions/Terms-e-Documents.aspx>. Attention is drawn to the limitation of liability, indemnification and jurisdiction issues defined therein. Any holder of this document is advised that information contained hereon reflects the Company's findings at the time of its intervention only and within the limits of Client's instructions, if any. The Company's sole responsibility is to its Client and this document does not exonerate parties to a transaction from exercising all their rights and obligations under the transaction documents. This document cannot be reproduced except in full, without prior written approval of the Company. Any unauthorized alteration, forgery or falsification of the content or appearance of this document is unlawful and offenders may be prosecuted to the fullest extent of the law. Unless otherwise stated the results shown in this test report refer only to the sample(s) tested.

Attention: To check the authenticity of testing /inspection report & certificate, please contact us at telephone: (86-755) 8307 1443, or email: CN.Doccheck@sgs.com

3rd Building, No. 889 Yishan Road Xuhui District, Shanghai China 200233 t E&E (86-21) 61402553 f E&E (86-21) 64953679 www.sgsgroup.com.cn
中国·上海·徐汇区宜山路889号3号楼 邮编: 200233 t HL (86-21) 61402594 f HL (86-21) 61156899 e sgs.china@sgs.com

备注:

(1) X 射线荧光光谱法(XRF)筛选结果说明:

(a)下表为 IEC62321-3-1: 2013 附录 A 不同基体材料中以 mg/kg 表示的筛选元素限值:

元素	聚合物	金属	复合材料
Cd	$BL \leq (70-3\sigma) < X < (130+3\sigma) \leq OL$	$BL \leq (70-3\sigma) < X < (130+3\sigma) \leq OL$	$LOD < X < (150+3\sigma) \leq OL$
Pb	$BL \leq (700-3\sigma) < X < (1300+3\sigma) \leq OL$	$BL \leq (700-3\sigma) < X < (1300+3\sigma) \leq OL$	$BL \leq (500-3\sigma) < X < (1500+3\sigma) \leq OL$
Hg	$BL \leq (700-3\sigma) < X < (1300+3\sigma) \leq OL$	$BL \leq (700-3\sigma) < X < (1300+3\sigma) \leq OL$	$BL \leq (500-3\sigma) < X < (1500+3\sigma) \leq OL$
Br	$BL \leq (300-3\sigma) < X$	不适用	$BL \leq (250-3\sigma) < X$
Cr	$BL \leq (700-3\sigma) < X$	$BL \leq (700-3\sigma) < X$	$BL \leq (500-3\sigma) < X$

(b) 现行法规限制的最大允许值是对 PBB/PBDE 和 Cr(VI) 而不是对 Br 和 Cr 的, 而 XRF 测定的是 Br 和 Cr。如果元素 Br 和或 Cr 的定量结果均高于限值(Br 计算基于在常见物质中 PBB/PBDE 的组成的理论计算), 则样品的筛选结果为“不确定”。

(c) EDXRF 的结果用于初步筛选, LOD=检出限, BL=低于限值, OL=超出限值, IN (符号“X”标记的区域)=不确定, 需要进一步研究, 我们建议客户用更精确的化学检测方法测试样品, 如用 ICP-OES 测试 Cd/Pb/Hg; 用 UV-Vis 测试 Cr(VI); 用 GC-MS 测试 PBB/PBDE。

(d) 对于复合材料, EDXRF 筛选检测 RoHS 元素所得数据可能与样品中实际含量不同。

(2) 邻苯二甲酸酯(PHTH)筛分结果只作初步筛选, 如果检测结果超出下表所规定的警戒范围, 我们采用更精确的化学检测方法检测样品, 用 GC-MS 检测 DBP、BBP、DEHP 和 DIBP (单位: mg/kg)。

检测项目	CAS No.	聚合物/复合材料
邻苯二甲酸二丁酯 (DBP)	84-74-2	$BL \leq 600 < X$
邻苯二甲酸丁苄酯 (BBP)	85-68-7	$BL \leq 600 < X$
邻苯二甲酸二(2-乙基己基)酯 (DEHP)	117-81-7	$BL \leq 600 < X$
邻苯二甲酸二异丁酯 (DIBP)	84-69-5	$BL \leq 600 < X$

(3) 化学检测方法结果说明:

(a) $mg/kg = 0.0001\%$, MDL=方法检测限, ND =未检出(低于 MDL), --- =不适用。

(b) 化学检测方法的表达单位和方法检测限

检测项目	Pb	Cd	Hg	DBP	BBP	DEHP	DIBP
单位	mg/kg	mg/kg	mg/kg	mg/kg	mg/kg	mg/kg	mg/kg
方法检测限	10	10	10	100	100	100	100

任何一种 PBB 和 PBDE 的方法检测限是 100 mg/kg;

聚合物, 复合材料和皮革样品中 Cr(VI)的方法检测限是 10 mg/kg。

金属样品中 Cr(VI)的方法检测限是 0.10 $\mu g/cm^2$ 。

(c) ▼ = 金属样品中

a. 当六价格的浓度高于 0.13 $\mu g/cm^2$ 时, 样品为阳性, 即含有六价格;

b. 当六价格的浓度为 ND(低于 0.10 $\mu g/cm^2$)时, 样品为阴性, 即未检测到六价格;

c. 当六价格的浓度介于 0.10 $\mu g/cm^2$ 与 0.13 $\mu g/cm^2$ 之间时, 无法直接判定是否检测到六价格, 因不同个体的样品表面差异可能会影响测定结果;

由于未获知样品的存储条件和生产日期, 样品的六价格检测结果仅能代表检测时样品含六价格的状态。

(4) RoHS 指令中限制物质及均质材料中最大允许浓度值: Cd: 0.01%, Pb/Hg/Cr(VI)/PBB/PBDE/ DEHP /DBP/BBP/DIBP: 0.1%, 限值引用自 RoHS 指令(EU) 2015/863。



Unless otherwise agreed in writing, this document is issued by the Company subject to its General Conditions of Service printed overleaf, available on request or accessible at <http://www.sgs.com/en/Terms-and-Conditions.aspx> and, for electronic format documents, subject to Terms and Conditions for Electronic Documents at <http://www.sgs.com/en/Terms-and-Conditions/Terms-e-Documents.aspx>. Attention is drawn to the limitation of liability, indemnification and jurisdiction issues defined therein. Any holder of this document is advised that information contained hereon reflects the Company's findings at the time of its intervention only and within the limits of Client's instructions, if any. The Company's sole responsibility is to its Client and this document does not exonerate parties to a transaction from exercising all their rights and obligations under the transaction documents. This document cannot be reproduced except in full, without prior written approval of the Company. Any unauthorized alteration, forgery or falsification of the content or appearance of this document is unlawful and offenders may be prosecuted to the fullest extent of the law. Unless otherwise stated the results shown in this test report refer only to the sample(s) tested.

Attention: To check the authenticity of testing /inspection report & certificate, please contact us at telephone: (86-755) 8307 1443, or email: CN.Doccheck@sgs.com

SGS-CSTC 中检集团技术服务有限公司
SGS-CSTC 中检集团技术服务有限公司
Testing Center-Chemical Laboratory

3rd Building, No.889 Yishan Road Xuhui District, Shanghai China 200233
中国·上海·徐汇区宜山路889号3号楼 邮编: 200233

t E&E (86-21) 61402553 f E&E (86-21) 64953679 www.sgsgroup.com.cn
t HL (86-21) 61402594 f HL (86-21) 61156899 e sgs.china@sgs.com

(5) IEC 62321 系列等同于 EN 62321 系列。

(6) ▲=根据客户提供的声明, 编号 A10 中的铅(Pb)被欧盟 RoHS 指令 2011/65/EU 豁免, 相应豁免条文(请以英文原文为准) [ANNEX III 6(c)]: 铜合金中的铅含量不得超过 4%。

更多豁免相关信息, 可以从以下链接获取:

<https://rohs.sgsonline.com.cn/PDFLinks/zh-cn/RSTS-TP-037%20RoHS%20Exemption%20%28CN%29.pdf>

(7) 根据申请商申明, 型号“UGLB2-C/CV/S”的材质与型号“UGLB2-C/CV/S-1/2, UGLB2-C/CV/S-2/2, UGLH-CD/C, UGLH-CD/C-2/2, UGLH-C/CD, UGLH-C/CD-2/2, UGLH-CB/CD, UGLH-CB/CD-2/2, UGLH-VC/VC/S, UGLH-VC/VC/S-1/2, UGLH-VC/VC/S-2/2, UGLH-VC/VC/S-3/3, UGLH-VC/VC/S-1/3, UGLH-VC/VC/S-1/4, UGLH-PC/CV/S, UGLH-PC/CV/S-1/2, UGLH-PC/CV/S-2/2, UGLH-WSR/S, UGLH-WSR/S-1/2, UGLH-WSR/S-2/2, UGLH-RS232/RS232/S, UGLH-RS485/RS485/S, UGLH-QRS485/QRS485/S, UGLH-TR/TR/S, UGLH-TR/TR/S-1/2, UGLH-TL/TL/S”的相同, 其测试结果用于替代型号“UGLB2-C/CV/S-1/2, UGLB2-C/CV/S-2/2, UGLH-CD/C, UGLH-CD/C-2/2, UGLH-C/CD, UGLH-C/CD-2/2, UGLH-CB/CD, UGLH-CB/CD-2/2, UGLH-VC/VC/S, UGLH-VC/VC/S-1/2, UGLH-VC/VC/S-2/2, UGLH-VC/VC/S-3/3, UGLH-VC/VC/S-1/3, UGLH-VC/VC/S-1/4, UGLH-PC/CV/S, UGLH-PC/CV/S-1/2, UGLH-PC/CV/S-2/2, UGLH-WSR/S, UGLH-WSR/S-1/2, UGLH-WSR/S-2/2, UGLH-RS232/RS232/S, UGLH-RS485/RS485/S, UGLH-QRS485/QRS485/S, UGLH-TR/TR/S, UGLH-TR/TR/S-1/2, UGLH-TL/TL/S”的测试结果。申请公司将承担所有的差异和风险。

除非另有说明, 参照 ILAC-G8:09/2019, 使用简单接受 ($w=0$) 的二元判定规则进行符合性判定。

除非另有说明, 此报告结果仅对检测的样品负责。本报告未经本公司书面许可, 不可部分复制。

检测报告仅用于客户科研、教学、内部质量控制、产品研发等目的, 仅供内部参考。



Unless otherwise agreed in writing, this document is issued by the Company subject to its General Conditions of Service printed overleaf, available on request or accessible at <http://www.sgs.com/en/Terms-and-Conditions.aspx> and, for electronic format documents, subject to Terms and Conditions for Electronic Documents at <http://www.sgs.com/en/Terms-and-Conditions/Terms-e-Documents.aspx>. Attention is drawn to the limitation of liability, indemnification and jurisdiction issues defined therein. Any holder of this document is advised that information contained hereon reflects the Company's findings at the time of its intervention only and within the limits of Client's instructions, if any. The Company's sole responsibility is to its Client and this document does not exonerate parties to a transaction from exercising all their rights and obligations under the transaction documents. This document cannot be reproduced except in full, without prior written approval of the Company. Any unauthorized alteration, forgery or falsification of the content or appearance of this document is unlawful and offenders may be prosecuted to the fullest extent of the law. Unless otherwise stated the results shown in this test report refer only to the sample(s) tested.

Attention: To check the authenticity of testing / inspection report & certificate, please contact us at telephone: (86-755) 8307 1443, or email: CN.Doccheck@sgs.com

3rd Building, No.889 Yishan Road Xuhui District, Shanghai China 200233 t E&E (86-21) 61402553 f E&E (86-21) 64953679 www.sgsgroup.com.cn
 中国·上海·徐汇区宜山路889号3号楼 邮编: 200233 t HL (86-21) 61402594 f HL (86-21) 61156899 e sgs.china@sgs.com

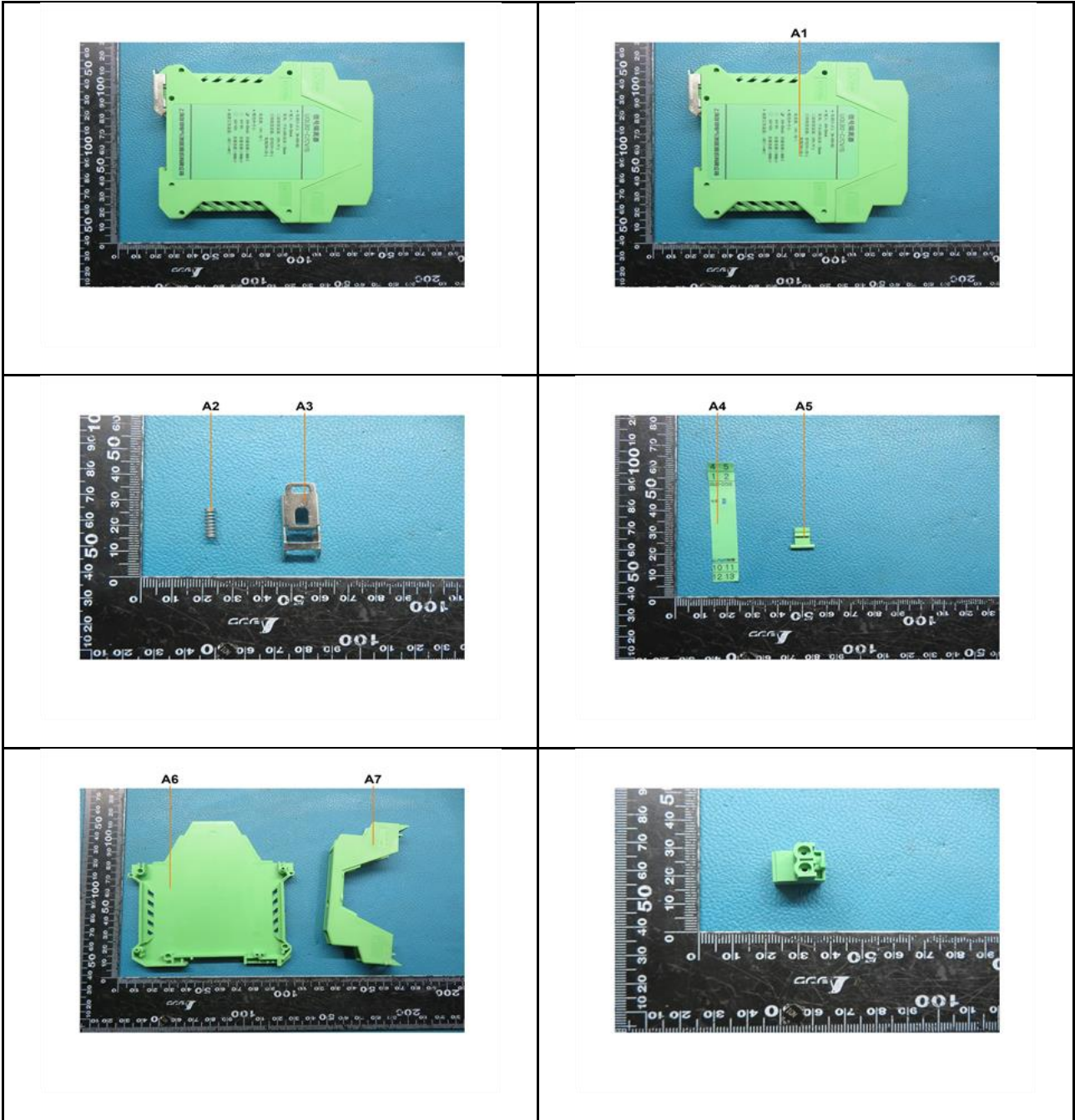
验证报告

编号: SHAEC24002261702

日期: 2024年02月20日

第9页, 共12页

样品照片:



SGS-CSTC (Shanghai) Co., Ltd.
Testing Center-Chemical Laboratory

Unless otherwise agreed in writing, this document is issued by the Company subject to its General Conditions of Service printed overleaf, available on request or accessible at <http://www.sgs.com/en/Terms-and-Conditions.aspx> and, for electronic format documents, subject to Terms and Conditions for Electronic Documents at <http://www.sgs.com/en/Terms-and-Conditions/Terms-e-Documents.aspx>. Attention is drawn to the limitation of liability, indemnification and jurisdiction issues defined therein. Any holder of this document is advised that information contained hereon reflects the Company's findings at the time of its intervention only and within the limits of Client's instructions, if any. The Company's sole responsibility is to its Client and this document does not exonerate parties to a transaction from exercising all their rights and obligations under the transaction documents. This document cannot be reproduced except in full, without prior written approval of the Company. Any unauthorized alteration, forgery or falsification of the content or appearance of this document is unlawful and offenders may be prosecuted to the fullest extent of the law. Unless otherwise stated the results shown in this test report refer only to the sample(s) tested.

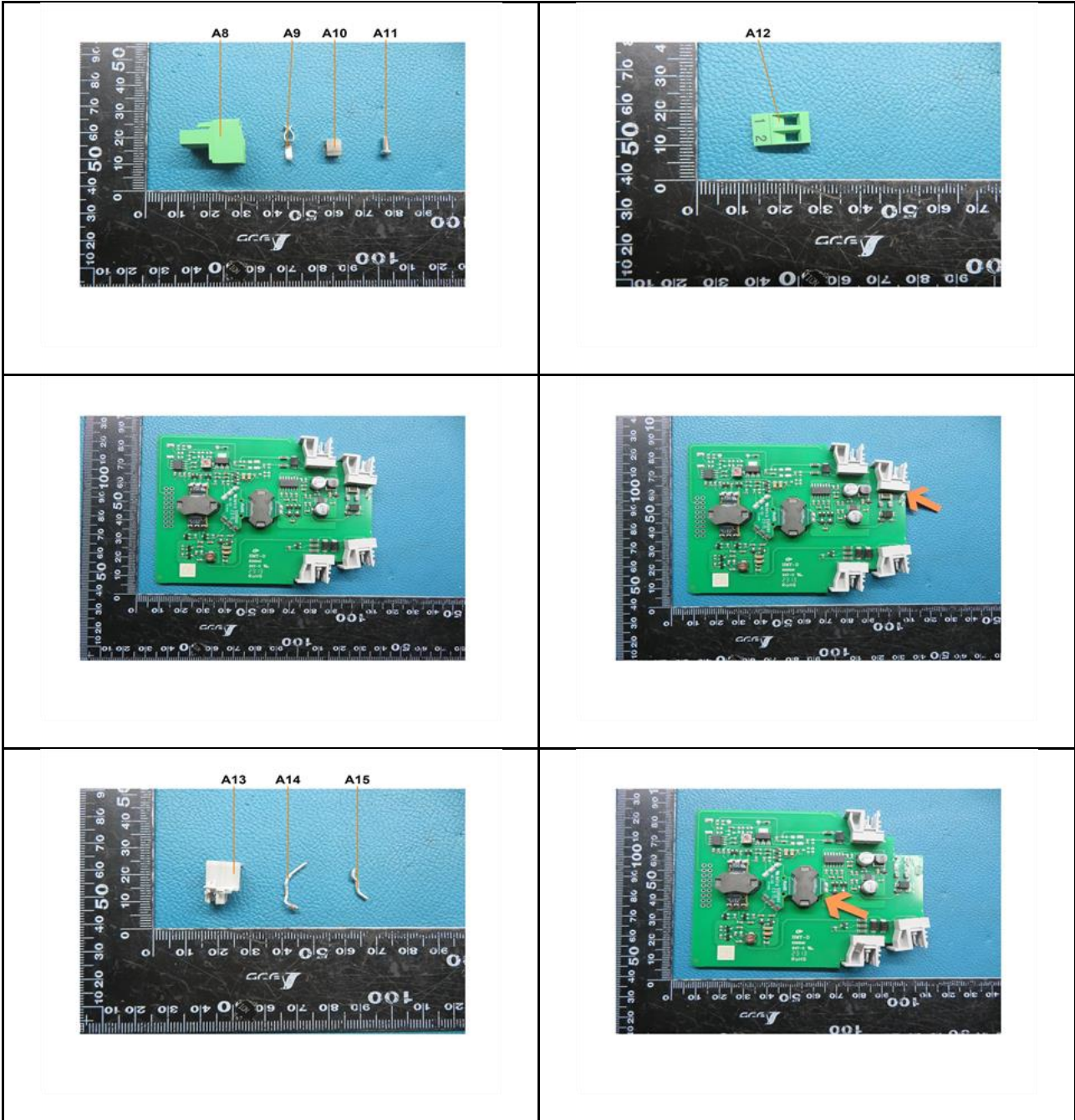
Attention: To check the authenticity of testing / inspection report & certificate, please contact us at telephone: (86-755) 8307 1443, or email: CN.Doccheck@sgs.com

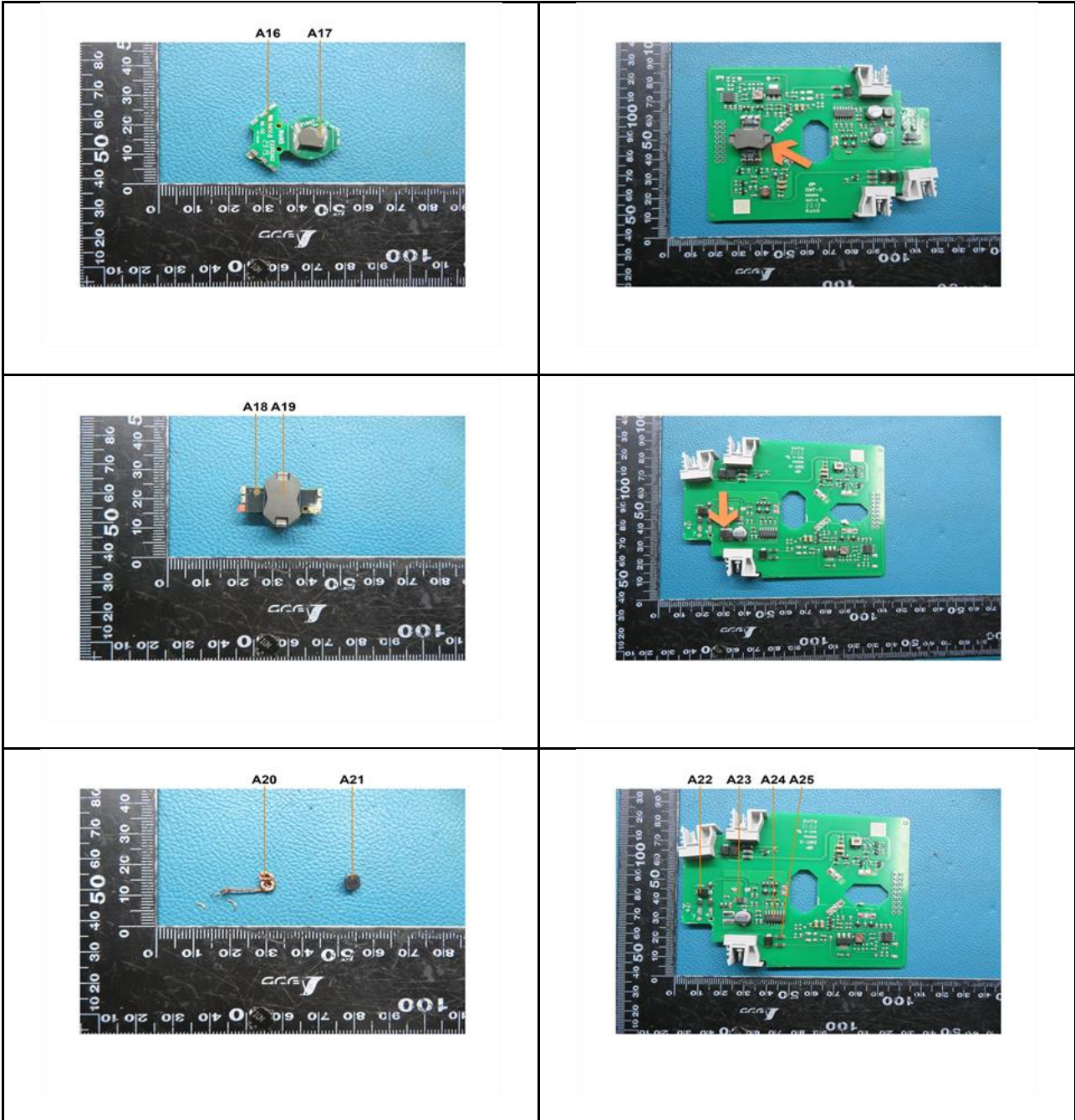
3rd Building, No.889 Yishan Road Xuhui District, Shanghai China 200233

中国·上海·徐汇区宜山路889号3号楼 邮编: 200233

t E&E (86-21) 61402553 f E&E (86-21) 64953679 www.sgsgroup.com.cn

t HL (86-21) 61402594 f HL (86-21) 61156899 e sgs.china@sgs.com





SGS-CSTC (Shanghai) Technical Services (Shanghai) Co., Ltd.
Testing Center-Chemical Laboratory

Unless otherwise agreed in writing, this document is issued by the Company subject to its General Conditions of Service printed overleaf, available on request or accessible at <http://www.sgs.com/en/Terms-and-Conditions.aspx> and, for electronic format documents, subject to Terms and Conditions for Electronic Documents at <http://www.sgs.com/en/Terms-and-Conditions/Terms-e-Document.aspx>. Attention is drawn to the limitation of liability, indemnification and jurisdiction issues defined therein. Any holder of this document is advised that information contained hereon reflects the Company's findings at the time of its intervention only and within the limits of Client's instructions, if any. The Company's sole responsibility is to its Client and this document does not exonerate parties to a transaction from exercising all their rights and obligations under the transaction documents. This document cannot be reproduced except in full, without prior written approval of the Company. Any unauthorized alteration, forgery or falsification of the content or appearance of this document is unlawful and offenders may be prosecuted to the fullest extent of the law. Unless otherwise stated the results shown in this test report refer only to the sample(s) tested.

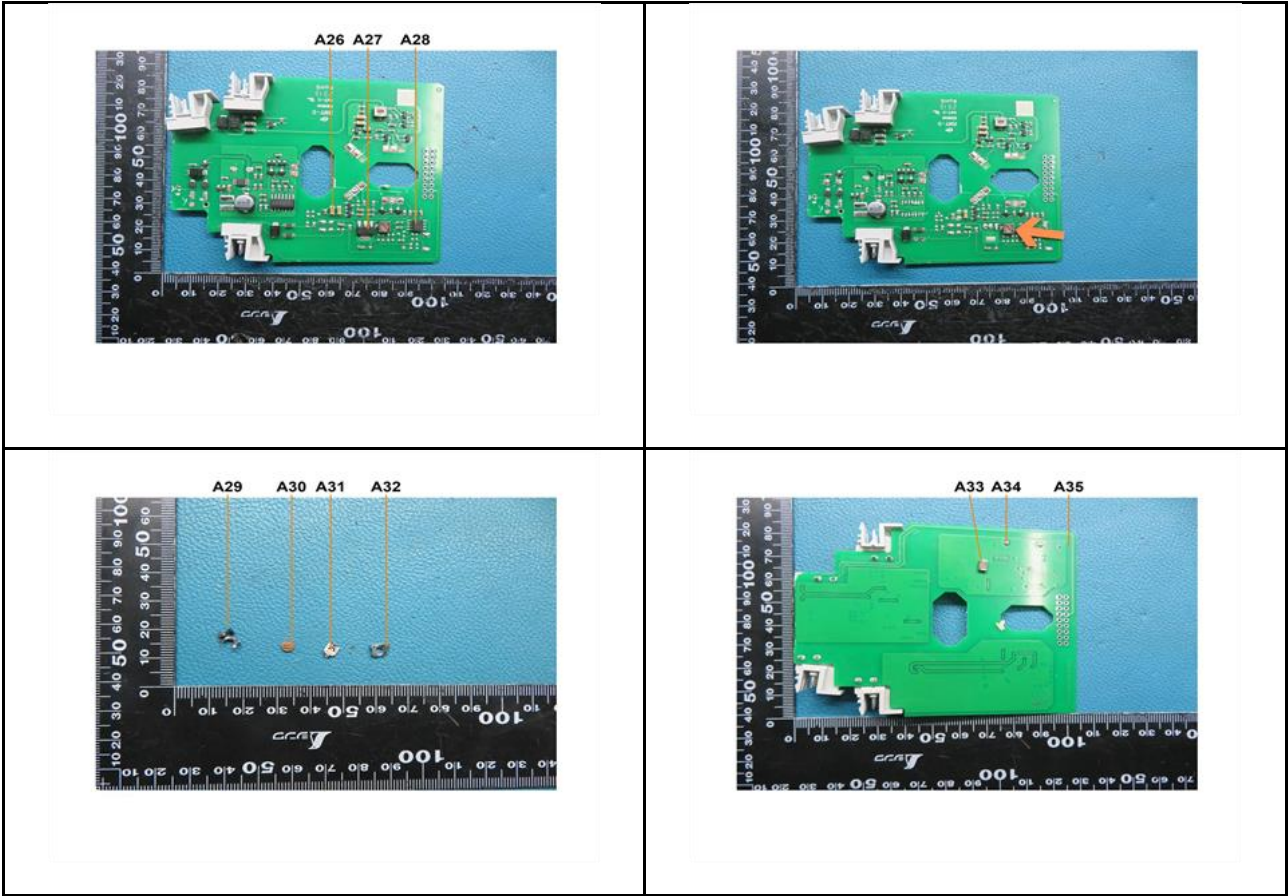
Attention: To check the authenticity of testing /inspection report & certificate, please contact us at telephone: (86-755) 8307 1443, or email: CN.Doccheck@sgs.com

3rd Building, No.889 Yishan Road Xuhui District, Shanghai China 200233

中国·上海·徐汇区宜山路889号3号楼 邮编: 200233

t&E (86-21) 61402553 f&E (86-21) 64953679 www.sgsgroup.com.cn

tHL (86-21) 61402594 fHL (86-21) 61156899 e sgs.china@sgs.com



此照片仅限于随 SGS 正本报告使用
报告结束



SGS-CSTC Standards Technical Services (Shanghai) Co., Ltd.
Testing Center-Chemical Laboratory

Unless otherwise agreed in writing, this document is issued by the Company subject to its General Conditions of Service printed overleaf, available on request or accessible at <http://www.sgs.com/en/Terms-and-Conditions.aspx> and, for electronic format documents, subject to Terms and Conditions for Electronic Documents at <http://www.sgs.com/en/Terms-and-Conditions/Terms-e-Documents.aspx>. Attention is drawn to the limitation of liability, indemnification and jurisdiction issues defined therein. Any holder of this document is advised that information contained hereon reflects the Company's findings at the time of its intervention only and within the limits of Client's instructions, if any. The Company's sole responsibility is to its Client and this document does not exonerate parties to a transaction from exercising all their rights and obligations under the transaction documents. This document cannot be reproduced except in full, without prior written approval of the Company. Any unauthorized alteration, forgery or falsification of the content or appearance of this document is unlawful and offenders may be prosecuted to the fullest extent of the law. Unless otherwise stated the results shown in this test report refer only to the sample(s) tested.

Attention: To check the authenticity of testing / inspection report & certificate, please contact us at telephone: (86-755) 8307 1443, or email: CN.Doccheck@sgs.com

3rd Building, No. 889 Yishan Road Xuhui District, Shanghai China 200233 t E&E (86-21) 61402553 f E&E (86-21) 64953679 www.sgsgroup.com.cn
中国·上海·徐汇区宜山路889号3号楼 邮编: 200233 t HL (86-21) 61402594 f HL (86-21) 61156899 e sgs.china@sgs.com